



ONE INCH MOTOR PROTECTOR G TYPE

- The G motor protector is designed to protect single phase induction motor against overload and locked rotor conditions.
- The most frequent application is found in compressors, air conditioning, commercial refrigeration and pumps.



GENERAL CHARACTERISTICS

- CONTACT CONFIGURATION: Single pole - Double break.
- MAX CONTACT RATING: Low capacity: 60A at 120Vac, 45A at 240Vac;
High capacity: 80A at 120Vac, 60A at 240Vac.

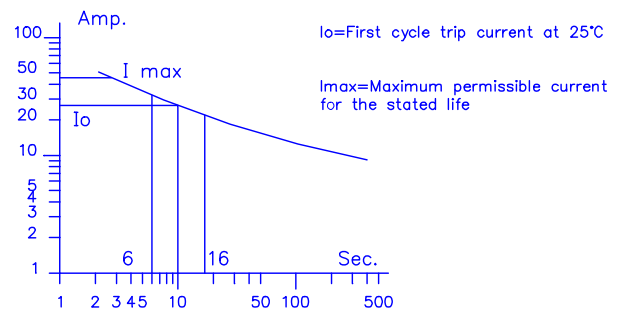
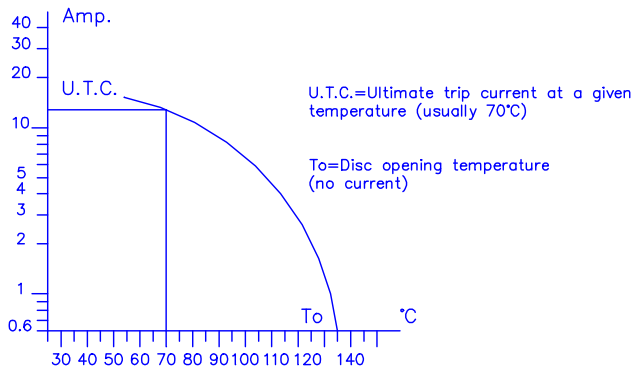
Above ratings are locked-rotor inductive currents (LRA)
- TEMPERATURE ADJUSTMENT: Automatic reset
Standard open from 105°C to 150°C ± 5°C;
Standard close from 52°C to 102°C ± 9°C
Manual reset
Open from 100° C to 150°C ±5°C;
Manual Reset after 3s from trip;
- TRIP-FREE OPERATION: No manual reset is possible under fault condition.
- TERMINAL CONFIGURATION: ¼" quick-connect
M3.5 screws
Solder terminal
Cable leads (AWG 14 or AWG 16)
- APPROVALS : C UL 51822
VDE 40011476 according to EN 60730-2-2
40011470 according to EN 60730-2-4



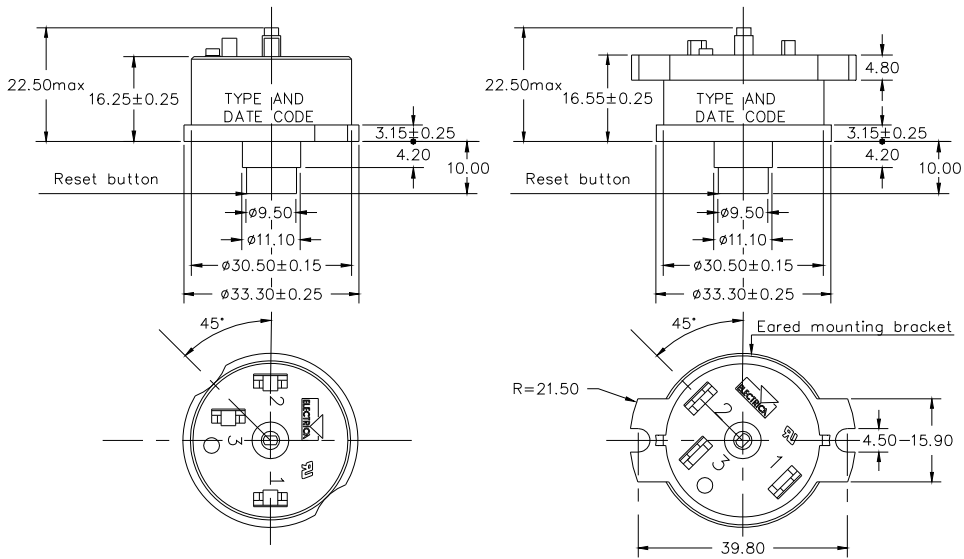
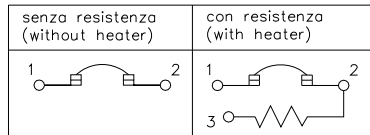
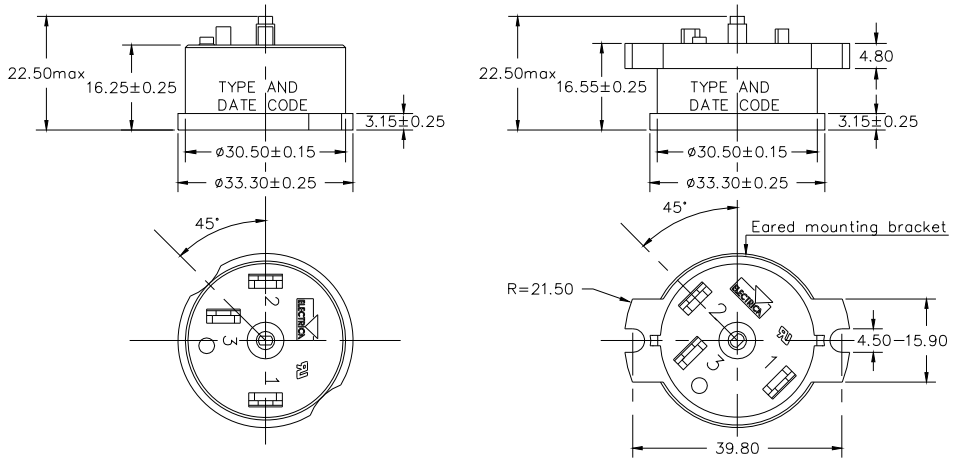
ORDERING INFORMATION

SAMPLE PART. NO.	G	A	2	S	M	A	00	XX					
1" Protector								Terminal and Mounting Data					
								Contact factory					
Contact and cover													
		With cover	Without cover										
Low capacity		A	C										
High capacity		B	D										
Disc Physical Size								Heaters					
1=25.4mm dia, full round								00 No Heater					
2=19.0mm dia, solid								From 01 to 20 Blanked Heaters					
3=19.0mm dia perforated								From 21 to 80 Formed Wire Heaters					
								From 81 to 99 Special Heaters					
Disc Material													
Depending on application													
Disc open temperatures (frequently used)													
CODE	F	G	H	J	K	L	M	N	P				
TEMP.°C	150	145	140	135	130	125	120	115	110				
Disc close temperatures (frequently used)													
MANUAL RESET													
CODE: A													
AUTOMATIC RESET													
CODE:	F	J	K	N	S	U	W						
TEMP.°C	102	92	87	78	69	61	52						

EXAMPLE OF PERFORMANCE CURVES



OUTLINE DRAWINGS



For special applications or mountings not shown in this catalogue, please contact the Factory

Electrica s.r.l. - via privata Della Torre, 24 - 20127 Milano - Italy
 Tel. +39 02 2892641 Fax +39 02 2827511
www.electrica.it info@electrica.it